

LVDROP 8.0

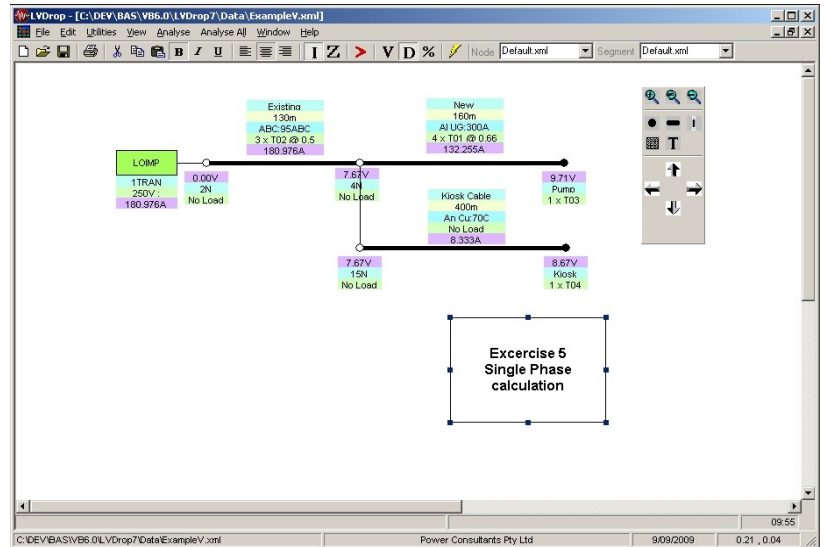
Evaluates Effect of Load Diversity
on Voltages and Currents in Low/
Medium voltage networks

LVDrop – For Windows XP / Vista & 7.0

Application

Use LVDROP for:

- Residential housing estate design
- Industrial estate design
- Mixed residential/ commercial/ industrial estate design
- Optimizing cable sizes
- Investigating voltage complaints from customers
- Evaluating alternative distribution system designs and reviewing standard designs
- Checking work of consultants
- Electrical design education and training – tutorial, assignment or work group activities
- Load balance assessment and checks



Features

- **Accurate** – Uses a statistical approach which is more accurate than traditional methods.
- **Easy to use** – Takes only minutes to learn to use. Up to date PC software techniques makes the software truly user friendly
- **Flexible** – automatically handles both radial and complex networks with loops and parallel sections.
- **Point loads** at connection nodes as well as the conventional loads distributed along feeder segments.
- **Individual Load** power factors
- **More load types** within a given study
- **Larger networks**, there is no practical limit to the number of segments included in a study.
- **Reads and analyses** files created in earlier versions.
- **Single and 3 Phase** calculations
- **Print Preview**
 - New Print Function allows Preview before printing
 - Preview System Diagram with Legend
 - Conductor Lists Preview
 - Conductor Variable Lists Preview
 - Transformer Lists Preview
 - New Cost Summary – cost/metre of each segment
 - Results Summary Report
- Free-Form Diagramming
- Multiple Studies Open At Once
- Multiple Transformers
- XML System and Data File Format
- Implements both Energex standard design procedures and ACTEW-AGL's multi statistical, risk-assessed design procedures.
- Standard file format allows for interfacing to GIS systems.

System Requirements

- IBM compatible computer with Windows XP / Vista or 7.0
- At least the minimum memory required by the operating system
- Approximately 16mb Hard disk space
- Printer or plotter (Colour preferred)

Power Consultants Ltd NZ 64 9 4440663

Power Consultants PTY Ltd. Aus. 61 2 99296019
email: Info@Datashare.com.au - website: www.datashare.com.au